

Paul Mason Associates



Roxwell Avenue, Chelmsford, Essex, CM1 2NX

Offers in excess of £500,000



## DISTANCES

Chelmsford Station: 1.7 miles  
(Liverpool Street from 34 mins)  
Ingatestone Station: 7.5 miles  
(Liverpool Street from 29 mins)  
M25: 13 miles  
Stansted Airport: 16 miles  
(All distances are approximate)

## ACCOMMODATION

### GROUND FLOOR

#### Hallway

The property is entered via a glazed door leading to the hallway, with radiator, storage cupboard, wooden flooring and smooth coved ceiling with drop ladder accessing the loft space.

#### Lounge

4.95m x 3.60m (16'2" x 11'9")  
Two double glazed windows to front, feature fireplace with gas fire, radiator, carpet to floor and smooth coved ceiling.

#### Kitchen / Breakfast Room

4.10m x 3.63m (13'5" x 11'10")  
Double glazed window to conservatory, fitted kitchen with a range of base and wall units with granite effect work surfaces incorporating a one and half bowl sink drainer unit with central mixer tap and tiled splashback, built-in oven,

microwave and hob with extractor over, integrated fridge/freezer, wall mounted boiler in cupboard, radiator, tiled flooring and coved ceiling with sunken spotlights. Glazed door to the conservatory.

#### Dining Room

2.73m x 2.56m (8'11" x 8'4")  
Conveniently positioned off the kitchen via glazed double doors, radiator, wooden flooring and smooth coved ceiling.

#### Conservatory

3.75m x 2.21m (12'3" x 7'3")  
Part uPVC and part brick built with a polycarbonate roof, radiator, tiled flooring and glazed patio doors to the rear garden.

#### Bedroom One

5.43m x 3.09m (17'9" x 10'1")  
Double glazed window to rear, radiator, carpet to floor and smooth coved ceiling. Glazed door to rear garden.

#### Bedroom Two

4.21m x 2.98 (13'9" x 9'9")  
Double glazed window to front, radiator, carpet to floor and smooth coved ceiling.

#### En-Suite WC

LLWC, pedestal wash hand basin with tiled splashback,

heated towel rail, tiled flooring and coved ceiling.

#### Bathroom

2.98m x 2.22m (9'9" x 7'3")  
Panelled bath plus separate shower cubicle, LLWC, pedestal wash hand basin with tiled splashback, bidet, heated towel rail, tiled flooring and smooth ceiling with sunken spotlights and sun pipe.

## EXTERIOR

### Garage & Driveway

The property benefits from an attached garage with up and over door and power and lighting fitted plus eaves storage and courtesy door to the rear garden.

### Garden

The rear garden has been landscaped with low maintenance in mind. There is an artificial lawn plus patio area, with an array of flower and shrub planting, storage shed, outside tap, covered barbecue area and access gate to rear.

### Important Notices

We wish to inform all prospective purchasers that we have prepared these particulars including text, photographs and

measurements as a general guide. Room sizes should not be relied upon for carpets and furnishings. We have not carried out a survey or tested the services, appliances and specific fittings. These particulars do not form part of a contract and must not be relied upon as statement or representation of fact.

### Viewings

Strictly by appointment only through the selling agent Paul Mason Associates 01245 382555.



**Paul Mason** Associates

35 The Street  
Latchingdon  
Chelmsford  
Essex  
CM3 6JP  
T: 01621 742 310

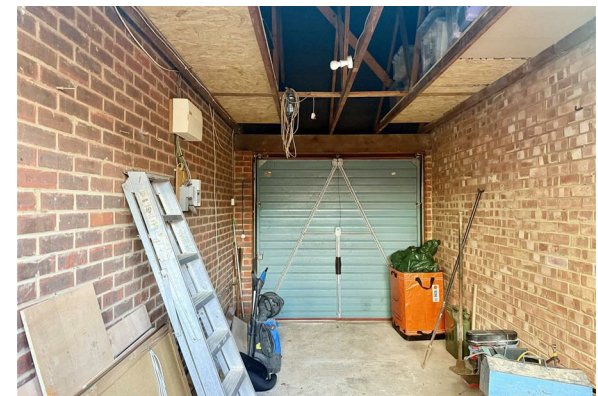
Bruce House  
17 The Street  
Hatfield Peverel  
Chelmsford  
CM3 2DP  
T: 01245 382 555

Sales | Lettings | Development | Investment

F: 01245 381257 E: [info@paulmasonassociates.co.uk](mailto:info@paulmasonassociates.co.uk) [www.paulmasonassociates.co.uk](http://www.paulmasonassociates.co.uk)

Paul Mason Associates Limited Registered in England Number - 6767946  
Registered Office - Bruce House, The Street, Hatfield Peverel CM3 2DP





Paul Mason Associates

35 The Street  
Latchingdon  
Chelmsford  
Essex  
CM3 6JP  
T: 01621 742 310

Bruce House  
17 The Street  
Hatfield Peverel  
Chelmsford  
CM3 2DP  
T: 01245 382 555

Sales | Lettings | Development | Investment

F: 01245 381257 E: info@paulmasonassociates.co.uk www.paulmasonassociates.co.uk

Paul Mason Associates Limited Registered in England Number - 6767946  
Registered Office - Bruce House, The Street, Hatfield Peverel CM3 2DP

